

Métalu A Chahuter presents

La Faille

Delphine Sekulak & Laure Chailloux

Musical and natural performance





What exactly are these two strange women doing, walking the streets with their tools and listening to the ground ? And what are they telling the weeds that emerge from the asphalt ? Are they botanists ? Explorers ? Water diviners ? In any case, they have a talent for finding the rift from which an unexpected landscape springs up both tiny and spectacular.



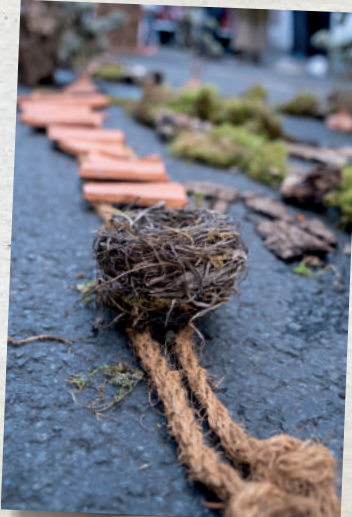
Under the tarmac...life

The city develops upon its omnipresent tarmac crust that is comforting albeit suffocating. In the city, nature is tamed and organised into sceneries such as gardens, parcs or driveways.

However, wild plants manage to grow here and there on the pavements. All they need is a little water and a little soil between two cobblestones, a crack in the asphalt, a fissure in the wall, a fault in the control, a rift.

This vulnerability gives rise to the unexpected, the beauty and the poetry of a resilient nature, a reality that refers more broadly to man's relationship with nature.

It is also a symbolic reference to the field of possibilities, to freedom, to stepping aside, to resistance.



A live performance of plants and music

The live process of creating a landscape put to music with unusual instruments sets a shared moment, a moment suspended between surprise and magic.

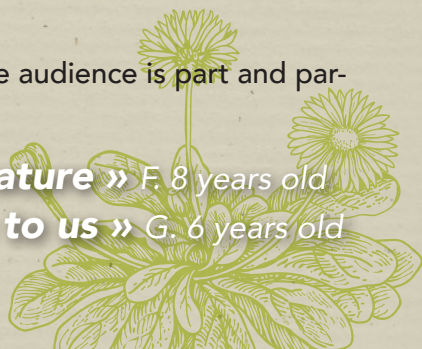


Here, everything comes from nature, a simple and aesthetic, playful and poetic nature : moss, barks, wooden bird calls, clay tiles, branches, Taoist bowl that makes the water sing, stones, bamboo hulusi flute, stumps.

At the end of the performance, the vegetal installation is left as it is so that the audience may go and observe it in detail and tell the artists what they have felt.

This proximity and exchange with the audience is part and parcel of « La Faille » / « The Rift ».

« Thank you for this magic of nature » F. 8 years old
 « It's as if nature was coming to us » G. 6 years old



General characteristics

- Location : street, town square, schoolyard (asphalt)
- Audience capacity : 30 to 100 people
- Duration : 30 min. performance
+ 20 min. installation to watch
- 2 people en tour
- Language : french, english or dutch

Technical requirements

- Minimum space : 7m x 6m
(performance + audience)
- The audience is placed all around the artists
- Technical autonomy
- Dismantling : 30 min.



Contact



Métalu A Chahuter

161 rue Roger Salengro – 59260 Hellemmes-Lille
projet@metaluachahuter.com
www.metaluachahuter.com

Production : Métalu A Chahuter • **Co-production :** Collectif Réso Asso Métro (dans le cadre de Fenêtre qui parle 2022 et de l'édition thématique de lille3000 UTOPIA) • **Soutiens :** Ville de Lille, Ville d'Hellemmes, Région Hauts-de-France